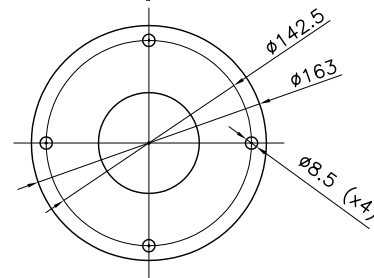


TECHNICAL DATA	
O.RING	EPDM
SLIPPER	PTFE+CARBON FIBER
BUSHING	AISI 316
NOZZLES POSITIONS	2 - 4
NOZZLES SIZE	SPECIAL
MAX OPERATING FLOW	120 L/min
MAX OPERATING PRESSURE	200 bar
MIN PASS THROUGH HOLE	75 mm ON CENTER LINE
MAX TEMPERATURE	90 °C
MATERIAL	INOX AISI 316
GEARS	FIXED Z=39 ROTATING Z=59
MODULE	1
FULL CYCLE	59 ROTATIONS
ELECTRIC MOTOR	63-B5 4 POLES 1400RPM 3PH 400V 50HZ
GEARBOX RATIO	1/67
ROTATION SPEED	21 RPM
FULL CYCLE TIME	2.8 MIN.
WEIGHT	14.2 KG



RUGOSITA' (UNI 4600)	MODIFICA					
		1	2	3	4	5
FOGLIO	XXXX					
DATA	XX.XX.XX					
GREZZO	TOLLERANZE GENERALI classe m UNI-EN 22768/1					
~ = ∅	0+6	6+30	30+120	120+400	400+1000	1000+2000
SGROSS.	± 0.1	± 0.2	± 0.3	± 0.5	± 0.8	± 1.2
∇ = 3.2/∇	NOTE:					
FINITURA	MATERIALE:					
∇∇ = 1.6/∇	DESCRIZIONE: APPLICATION DRAWING					
RETTIFICA	XB 100 EET ELECTRIC MOTOR					
∇∇∇ = 0.8/∇	CODICE: XB 100 EET cm					

Bolondi
CLEANING HEADS
MONTECCHIO E. (RE) - ITALY

DISEGN.: CR | CONTR.: DM
DATA: 23.03.10 | MOD.
SCALA: 1:3 | A3 | 0